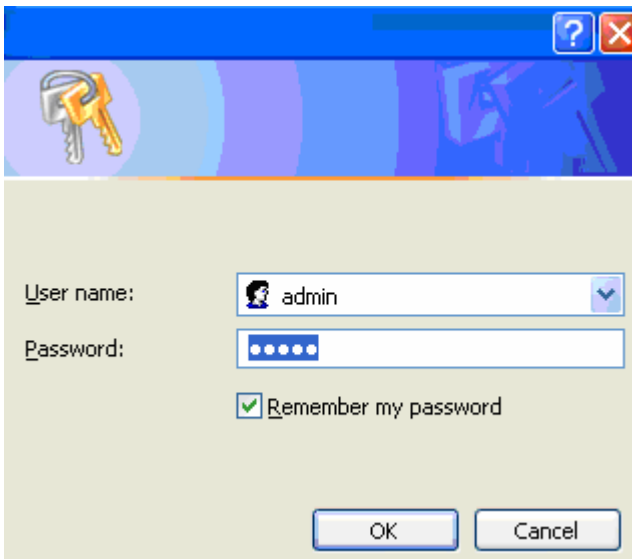


# D-Link DVG-G1402S Wireless VoIP Router

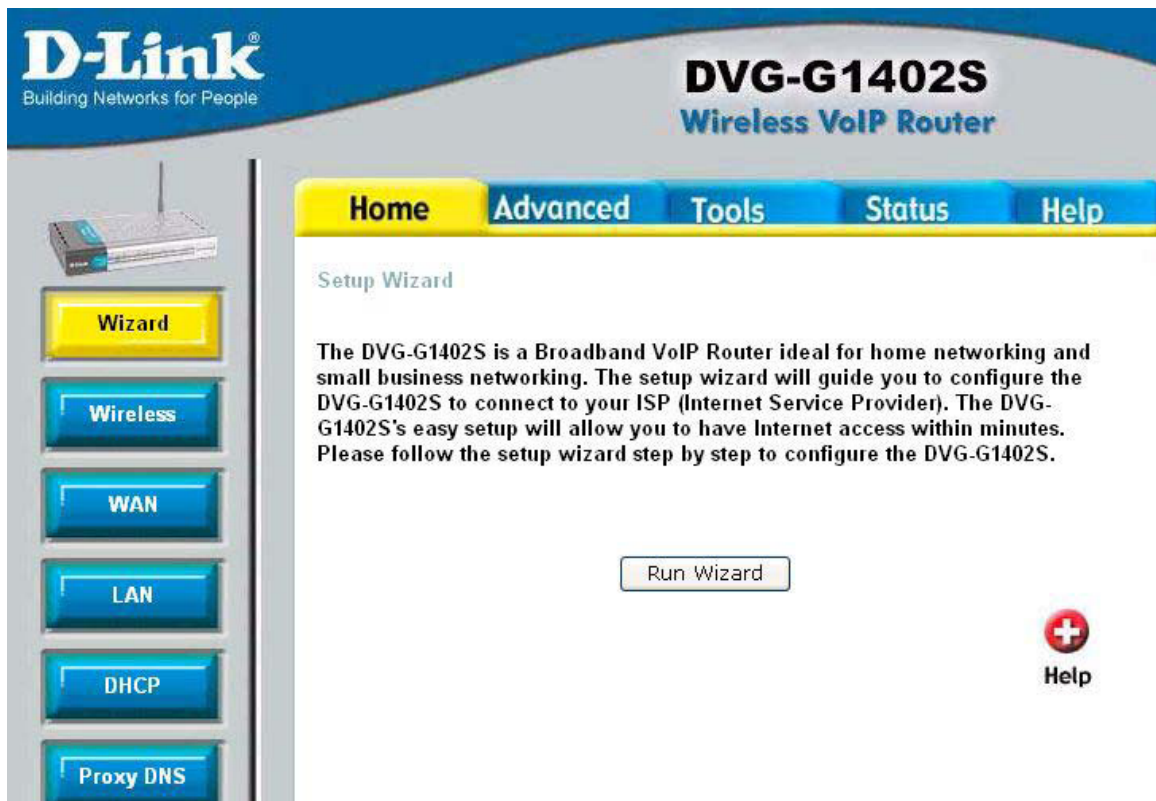
## Configuration

- Plug in an Ethernet cable from your AD SL Modem/Router into the WAN port on the DVG1402S.
- Plug in Ethernet computer your computer into the G1402S Wireless VoIP router.
- Type in the address 192.168.15.1
- The following screen appears



- Enter "admin" for username and password and select OK.

- The following page is displayed



- Select Advanced in the top menu

- The following page is displayed

The screenshot shows the configuration page for the Virtual Server feature. The left sidebar contains navigation buttons for Virtual Server, Filters, Firewall, RIP, Routing, VoIP, NAT, and Misc. The main content area has tabs for Home, Advanced, Tools, Status, and Help. The Virtual Server section is active, showing a description and configuration options. The 'Enabled' radio button is selected. Below the configuration fields is a 'Virtual Servers List' table with 6 rows, all showing 'Disabled' state. At the bottom right of the configuration area are 'Apply', 'Cancel', and 'Help' buttons.

**Virtual Server**  
Virtual Server is used to allow Internet users access to LAN services.

Enabled  Disabled

Index: 1

Private IP: 0 . 0 . 0 . 0

Protocol Type: TCP

Start Global Port: 0

End Global Port: 0

Start Local Port: 0

End Local Port: 0

**Virtual Servers List**

Index	Private IP	Protocol	start Global Port	end Global Port	start Local Port	end Local Port	State	Edit	Delete
1	0.0.0.0	0	0	0	0	0	Disabled		
2	0.0.0.0	0	0	0	0	0	Disabled		
3	0.0.0.0	0	0	0	0	0	Disabled		
4	0.0.0.0	0	0	0	0	0	Disabled		
5	0.0.0.0	0	0	0	0	0	Disabled		
6	0.0.0.0	0	0	0	0	0	Disabled		

Apply Cancel Help

- Select VoIP in the left Menu.

- The following page is displayed

Home **Advanced** Tools Status Help

SIP Configuration:  
 Server Configuration  Provisioning  STUN Configuration  User Agent

Peer to Peer  Telephony

SIP Server

Server FQDN: Enabled

IP Address: 0 . 0 . 0 . 0

Domain Name: sip.gotalk.com

Port: 5060

Outbound Proxy State: Disabled

Outbound Proxy Sever FQDN: Disabled

Outbound Proxy IP Address: 0 . 0 . 0 . 0

Outbound Proxy Domain Name:

Outbound Proxy Port: 0

Service Domain: sip.gotalk.com

URL Format: SIP-URL

User Parameter Phone: Enabled

Caller ID Delivery: YES

Display CID: Enabled

Timer T2: 4 sec

Initial Unregister: Enabled

**Register Expiration:** 3600 sec

Session Expires: 180 sec

Min-SE: 180 sec

Session Expires Refresher: uac

Codec Priority & Packet Interval

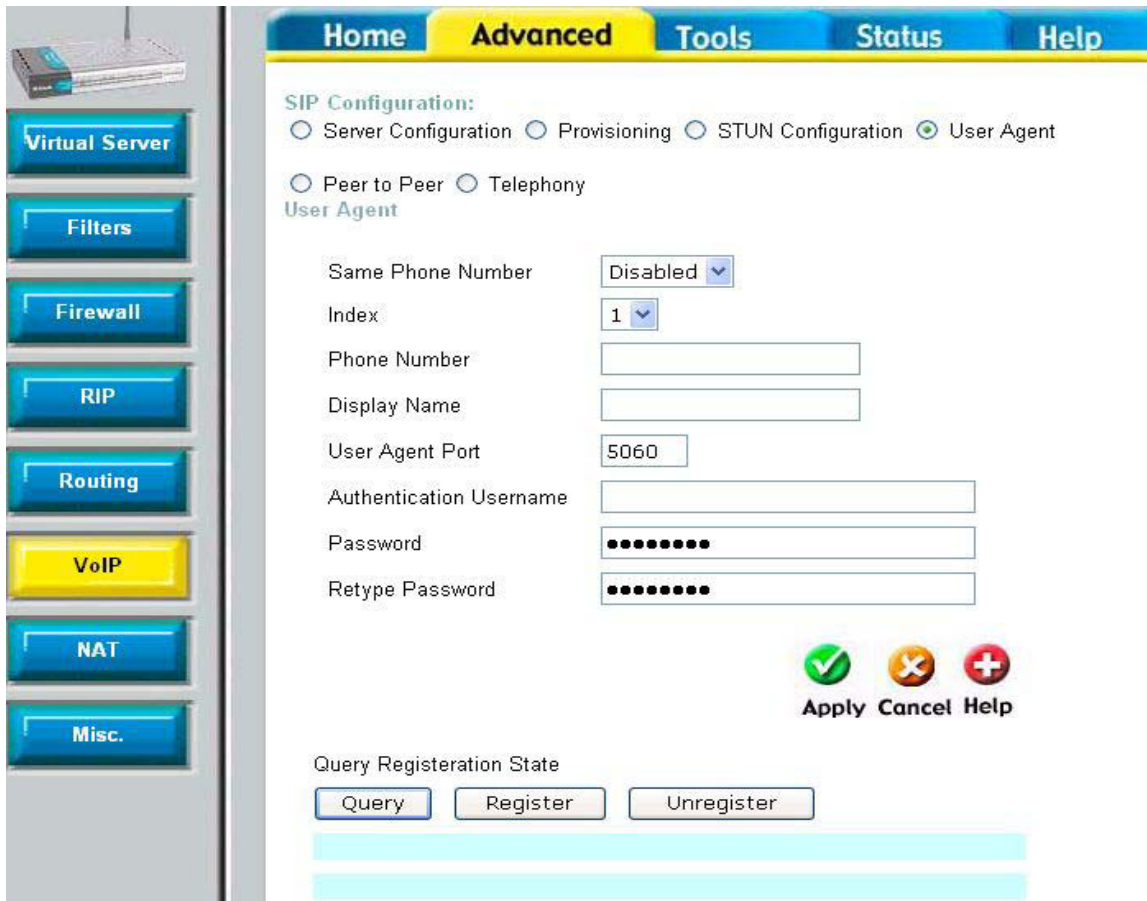
G.711a-law	3rd	20	ms
G.711u-law	2nd	20	ms
G.723.1	no-use	30	ms
G.729a	1st	20	ms
G.726	no-use	20	ms

Digit Map

Apply Cancel Help

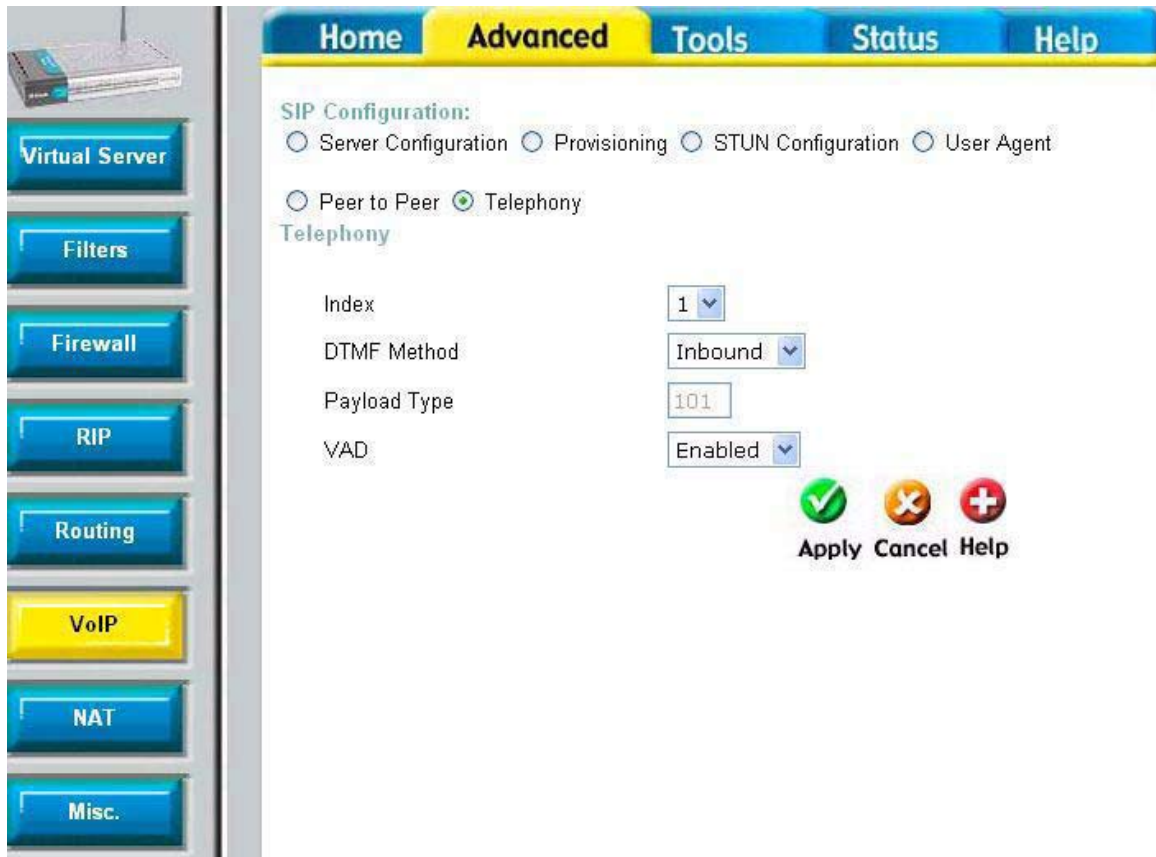
- Enter the settings as shown above

- Select Apply. A message appears advising changes will take effect when router is restarted. Select Ok.
- Click "User Agent" under SIP Configuration
- The following screen appears



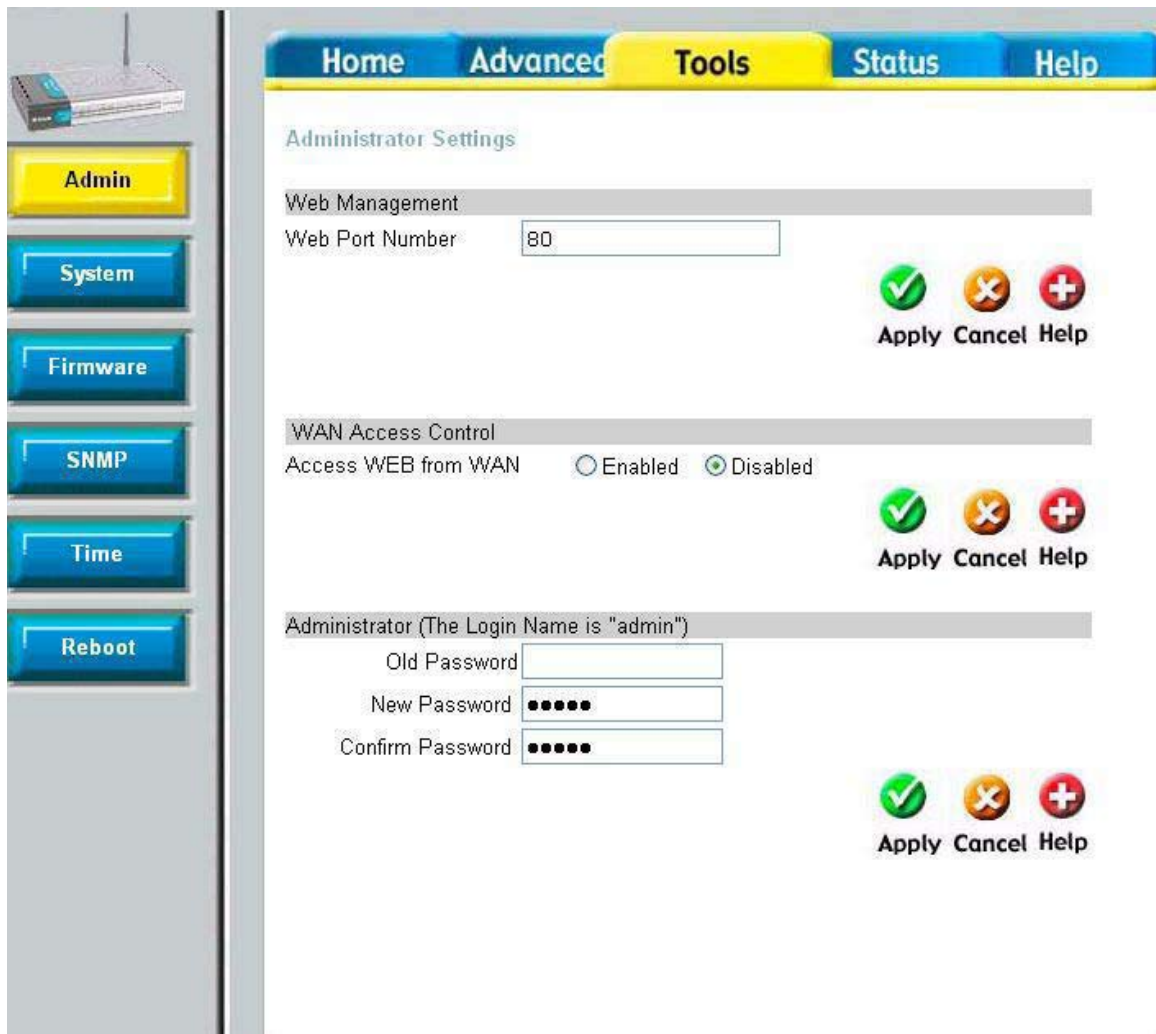
- Enter your ISN or Username in the Phone Number field
- Enter your ISN or Username in the Display Name field
- User agent port should be 5060
- Enter your ISN or Username in the "Authentication Name" field
- Enter your password in the Password field
- Retype the password
- Click Apply. A message appears advising changes will take effect when router is restarted. Click Ok.
- Click "Telephony" under SIP Configuration

- The following screen appears



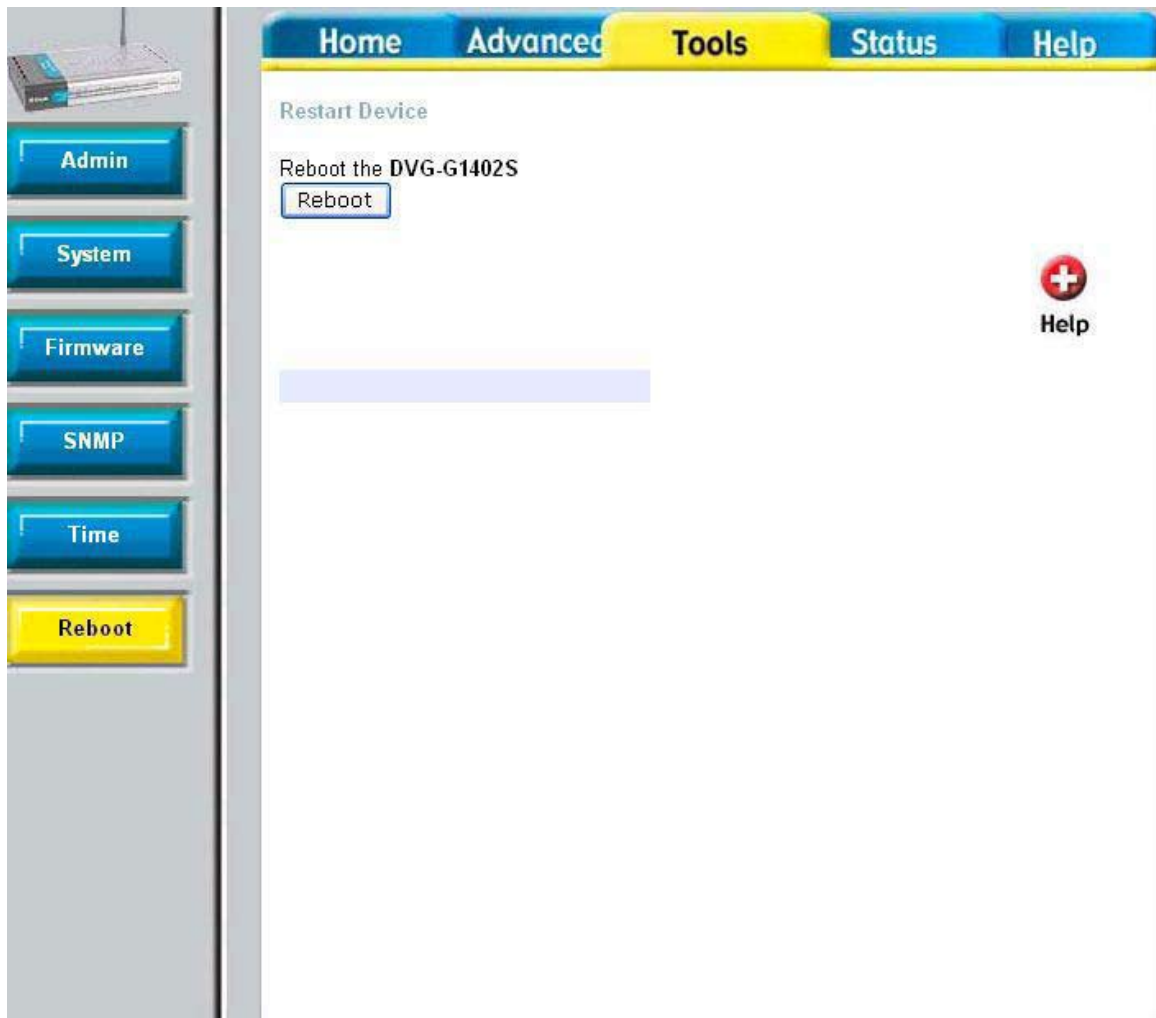
- Select DTMF as RFC 2833
- Select Apply. A message appears advising changes will take effect when router is restarted. Select Ok.
- Select Tools in the top menu.

- The following screen appears



- Select Reboot

- The following screen appears



- Select the “Reboot” button
- Close Internet Explorer
- Wait for two minutes.
- Plug in a phone in the “Line 1” socket in the router and check for Dial tone.